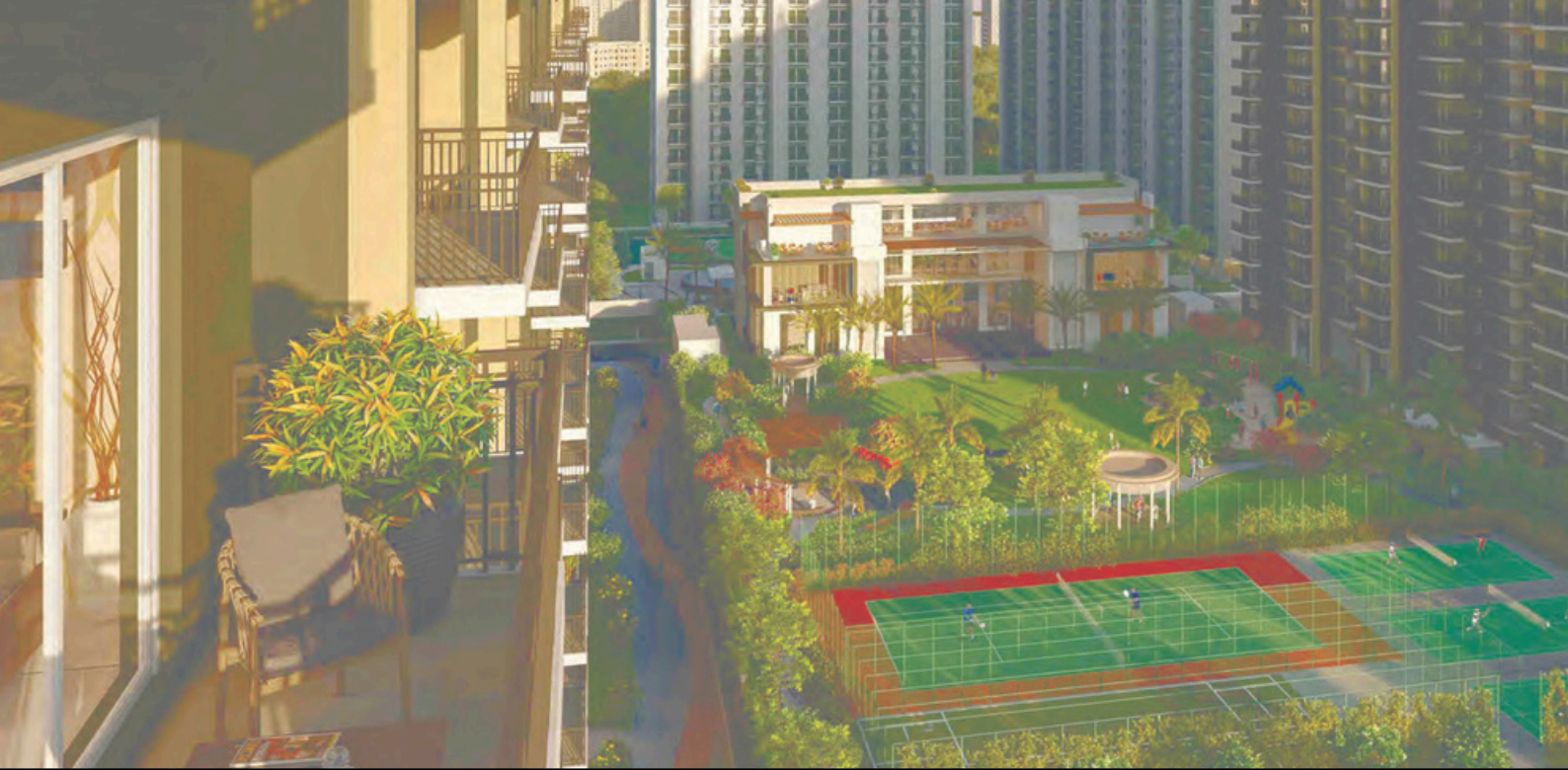


# STELLAR ONE

Phase - III

Where Trust, Quality and Location Converge

3 BHK APARTMENTS



## STELLAR ONE - ALL **PLUSES**, NO COMPROMISES.

UNBEATABLE **P**RICING.

UNBEATABLE **L**OCATION.

UNBEATABLE **Q**UALITY.

**S**USTAINABLE LIVING.



OPULENT & PREMIUM  
CLUB HOUSE



G+18 CONFIGURATION



DOUBLE HEIGHT  
ENTRANCE LOBBY



EXPANSIVE 1,20,000  
SQ. FT. LANDSCAPED  
PODIUM



GREEN BUILDING WITH  
PRECERTIFIED GOLD  
RATING



PRECAST  
CONSTRUCTION





# LANDSCAPE PLAN



## LEGEND

-  3 BHK 1800 (TYPE - I)  
 3 BHK 1915 (TYPE - II)  
 3 BHK 2020 (TYPE - III)

- 1 ENTRY PLAZA
- 2 PLAY LAWN
- 3 PARTY LAWN
- 4 JOGGING TRACK
- 5 TENNIS COURT
- 6 BADMINTON COURTS
- 7 CRICKET PRACTICE PITCH
- 8 HERB GARDEN

- 9 CLUB HOUSE**
- GYM
  - BANQUET HALL
  - BILLIARD'S ROOM
  - CHILDREN'S PLAY ZONE
  - CARD ROOM
  - TERRACE CAFE
  - TT ROOM
  - ZUMBA/DANCE STUDIO

- 10 MEDITATION/YOGA AREA
- 11 GREEN MAZE
- 12 SITTING AREA
- 13 KIDS PLAY AREA
- 14 SKATING RINK
- 15 BASKETBALL COURT
- 16 SWIMMING POOL
- 17 KIDS SWIMMING POOL
- 18 OPEN GYM
- 19 RAIN DANCE AREA
- 20 CHANGING ROOMS
- 21 TRANSFORMER YARD
- 22 DG YARD
- 23 SCHOOL BUS SHELTER
- 24 PEDESTRIAN - ONLY WALKING PATH
- 25 CSC BLOCK
  - PLAY SCHOOL
  - CONVENIENCE SHOPS
  - LIBRARY
  - BANQUET HALL



## PHASE III

## PHASE II



UNIT PLANS



TYPE	CARPET AREA	BALCONY AREA
( 3 BHK - I 1800 ) ( 3 BHK + 3 TOILETS + 3 BALCONIES + 1 UTILITY BALCONY )	95.61 SQ.M.	21.65 SQ.M.



TYPE	CARPET AREA	BALCONY AREA
( 3 BHK - II 1915 ) ( 3 BHK + 3 TOILETS + 2 BALCONIES + 1 UTILITY BALCONY + 1 ROOM WITH TOILET )	108.07 SQ.M.	16.89 SQ.M.



TYPE	CARPET AREA	BALCONY AREA
( 3 BHK - III 2020 ) ( 3 BHK + 3 TOILETS + 3 BALCONIES + 1 UTILITY BALCONY + 1 ROOM WITH TOILET )	108.07 SQ.M.	23.94 SQ.M.

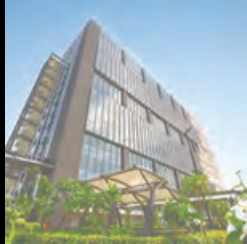


## A DIVERSIFIED BUSINESS WITH A SINGLE-MINDED FOCUS TOWARDS CUSTOMERS

Residential  
Apartments  
Villas  
Plots



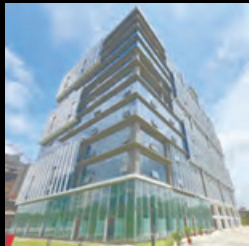
IT Parks  
Commercial  
Retail Spaces



Club  
Restaurant



Manufacturing



Stellar Group, established in 1996, has diversified business interests in Real Estate and Construction, Hospitality & Manufacturing.

The Group is actively involved in developing residential, commercial, and industrial properties in Noida and Greater Noida, in the National Capital Region of Delhi. With a strong commitment to quality and driven by passion, Stellar Group has achieved remarkable success over the years. To date, it has successfully developed & constructed over 10 million sq. ft. of residential, commercial, and industrial projects. Currently, the company has projects underway, encompassing a total area of about 3 million sq. ft., scheduled for construction in the near future. Stellar Group has earned a commendable reputation for delivering high-quality projects within strict timelines.

Apart from its real estate ventures, the Group owns Stellar Gymkhana, an exclusive 'Members Only' Club offering an urban retreat nestled in a 12-acre lush green stretch along the Greater Noida Expressway. With over 100 affiliations in India and abroad, the Club provides world-class facilities and services, making it a prestigious destination.

Real Estate & Construction

25 + Years of Experience

# Add a subheading

Every necessity

conveniently  
accessible



SCAN TO GET GOOGLE LOCATION

### YOUR BRIDGE TO NOIDA

Situated in the highly sought-after Sector-1 of Greater Noida (West), Stellar One proudly showcases thriving social infrastructure in its proximity and provides superb connectivity to the major landmarks. The project is well connected to the FNG Expressway, Central Noida, and Parichowkh.

#### APPROXIMATE DISTANCES :

NOIDA	- 2KM
NH-24	- 8KM
GAUR CITY MALL	- 6KM
YATHARTH HOSPITAL	- 1.4KM

NOIDA CITY CENTER  
METRO STATION  
PARI CHOWK

- 11KM  
- 17KM

Contact us: +91 7838921206



IN THE HIGHLY  
SOUGHT - AFTER  
LOCATION OF  
SECTOR-1,  
GREATER NOIDA  
(WEST)